

TAKE ME OUT SWINGIN'

Basie Swing ♩ = 110

*ff*

5

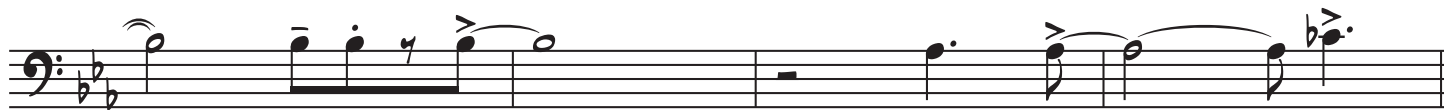
A

*mf*

13



17



21

B

CHA CHA CHA





29

1/2 SWING FEEL

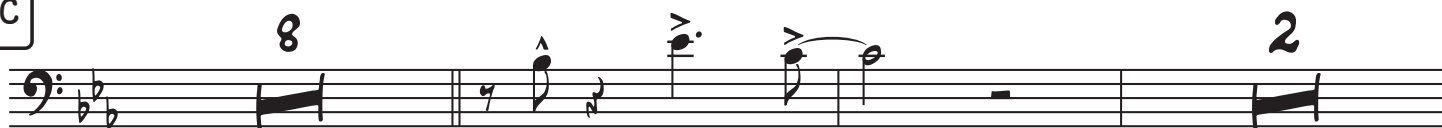


33

mf

37

C



53

CHA CHA CHA

CRESC.

D

*f*

61

1/2 SWING FEEL



65

mf

TAKE ME OUT SWINGIN'

3

The bass line is written on a single staff in bass clef with a key signature of one flat (B-flat). It consists of four measures. The first measure contains a whole note G2. The second measure contains a quarter rest followed by a quarter note G2, a quarter note F2, a quarter note E2, and a quarter note D2. The third measure contains a whole note G2. The fourth measure contains a quarter rest followed by a quarter note G2, a quarter note F2, a quarter note E2, and a quarter note D2.

69

[illegible]

73

sfz